

# BROOCH 2.0



© HEAD — Genève, Raphaëlle Mueller

## GÖTZ ALEXIA\_\_Pigeon Vole

Hardened steel, 925 silver

In an effort to demystify the romanticised vision of an Americanised Paris and ground it in everyday reality, these two spread-wing brooches symbolise the tragic yet utterly commonplace fate of these birds, fallen angels in the gutter.



© HEAD — Genève, Raphaëlle Mueller

## DUMOULIN AURELIAN\_\_L'amour au rat

Bronze, copper, brass

Three rats with intertwined tails represent Jerry, Lise and Henri in a post-war Paris. Their red stone eyes evoke the passion of the love triangle, whilst the knot of their tails speaks of the bond that ties them together forever.



© HEAD — Genève, Raphaëlle Mueller

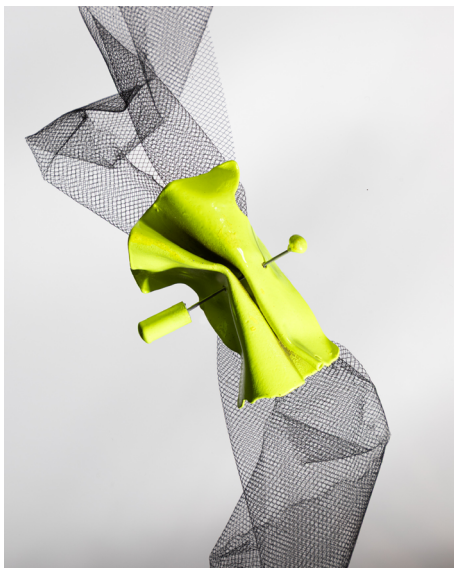
## MERLAND BALTAZAR\_\_Rêverie

Plexiglass, aluminium, rhinestones

This piano brooch is inspired by Adam, a tormented and passionate artist who dreams of living from his music. It captures the ambiguous relationship between a musician and his instrument, at once a source of joy and of suffering.

— HEAD  
Genève

# BROOCH 2.0



© HEAD — Genève, Raphaëlle Mueller

## ROCHAT CAROLINE\_\_Baby wake up, le pli est à la mode !

Powder-coated bronze

Inspired by the gathered costumes of the musical, these two brooches create the fold rather than simply adorning the garment. Ornament and fabric merge into a single object, generating volume and movement.



© HEAD — Genève, Raphaëlle Mueller

## GRETILLAT DELPHINE\_\_Ballet d'illusions

Brass, steel, silver, resin

Reversible and modular, this brooch is composed by two faces: one colourful and vibrant, inspired by the final ballet and costume jewellery, the other more refined, rooted in the jewellery world and evoking the Paris reconstructed by Hollywood studios. A central pin unites them, just as the film unites illusion and reality.



© HEAD — Genève, Raphaëlle Mueller

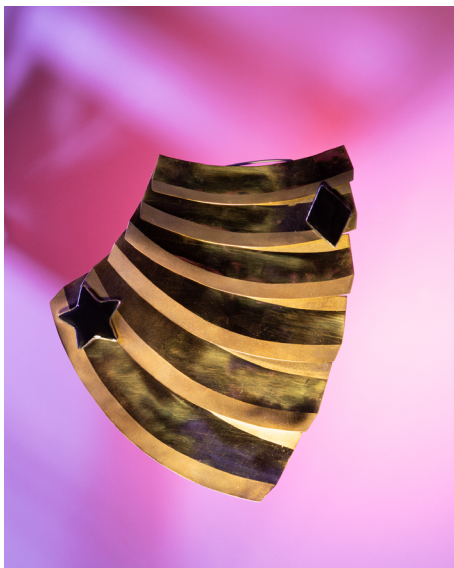
## BARRAU ELLA\_\_Trichromie

Brass sandblasted, polished or painted

Three independent modules, three primary colours, three characters. Their forms are inspired by organ pipes, in reference to the symphonic poem from which the musical originates. The brooch assembles or separates, reflecting the shifting closeness and distance of the love triangle.

— HEAD  
Genève

# BROOCH 2.0



© HEAD — Genève, Raphaëlle Mueller

## **RAU EMILIE\_\_I'll build a stairway to Paradise**

Brass, plexiglass, black UV varnish

A star and a diamond shape represent the two protagonists, united on a symbolic staircase. The brooch evokes their shared ascent, from dream to reality, from war to hope

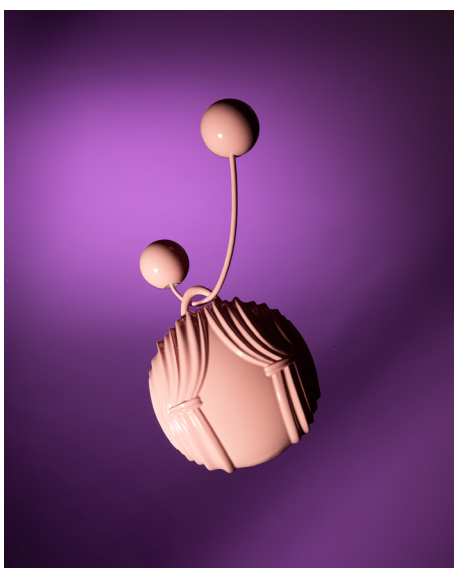


© HEAD — Genève, Raphaëlle Mueller

## **JENNE LARISSA\_\_Tir à l'arc**

Brass, steel

Five Cupid's arrows, one for each character, each following its own trajectory. This tremblant brooch comes to life with the movement of its wearer, evoking the romantic disorder and dreamy atmosphere of the film.



© HEAD — Genève, Raphaëlle Mueller

## **BRAILLARD LAURA MARIE\_\_I love you but I love me more**

925 silver, automotive paint, resin, epoxy, copper

Pink on the front, silver metal on the reverse: this reversible brooch offers a reinterpretation of Lise Bouvier, no longer an idealised muse, but a woman in her own right. The inscription engraved on the back raises the question the film never dares to ask: who is Lise, before being someone's lover?

—HEAD  
Genève

# BROOCH 2.0



© HEAD — Genève, Raphaëlle Mueller

## ZAMBRANO LENA\_\_Galeries Duval

925 silver, mother-of-pearl, zircon

Inspired by Lise, a perfume sales assistant, this brooch takes the form of a perfume bottle. Its shell pendants are designed to chime softly, making this piece as much a sensory object as an ornamental one.



© HEAD — Genève, Raphaëlle Mueller

## ULRICH NICOLAS\_\_L'Aile de Milo

Steel, feathers

Red feathers and cold steel compose this brooch dedicated to Milo, a character who appears carefree on the surface yet is deeply lonely within. The materials reflect his duality: warmth and passion on one side, rigidity and sorrow on the other.



© HEAD — Genève, Raphaëlle Mueller

## BERGER PRUNE\_\_Blue Memory

Bronze, brass, resin

This commemorative brooch pays tribute to the victims of the war. A grosgrain ribbon, a material associated with military medals, is fossilised in resin like a preserved memory. Its form evokes a star and an atomic structure, symbols of an era turned towards the future, yet bound to remembrance.

— HEAD  
Genève

# BROOCH 2.0



## RODRIGUES FERREIRA ANA\_Kitschissime

Brass, plastic

This piece draws on kitsch, omnipresent in the musical, both in its aesthetic, its narrative, as well as in the interplay of backlighting and contrasts created by light. The brooch adopts these formal codes while evoking a shadow-like presence. It also incorporates openwork motifs inspired by the musical's iconic fountain.

© HEAD — Genève, Raphaëlle Mueller